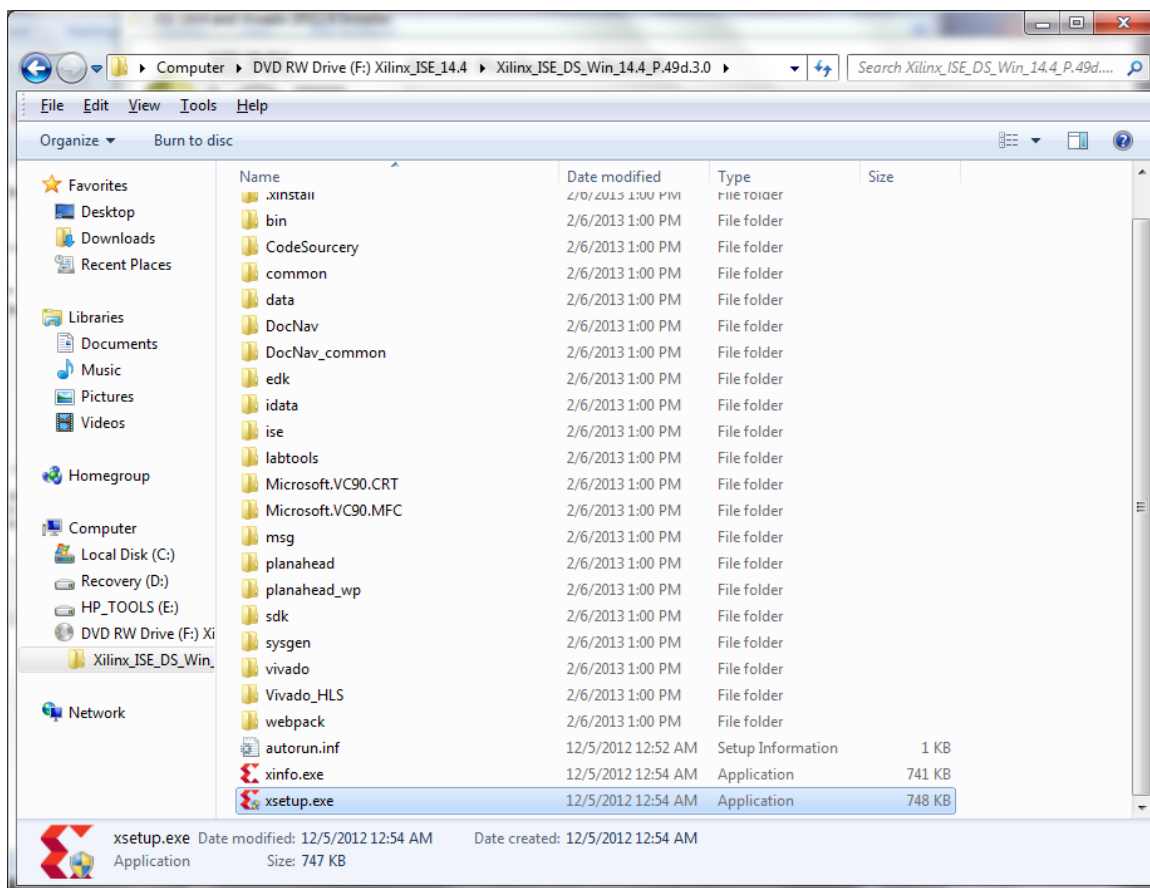


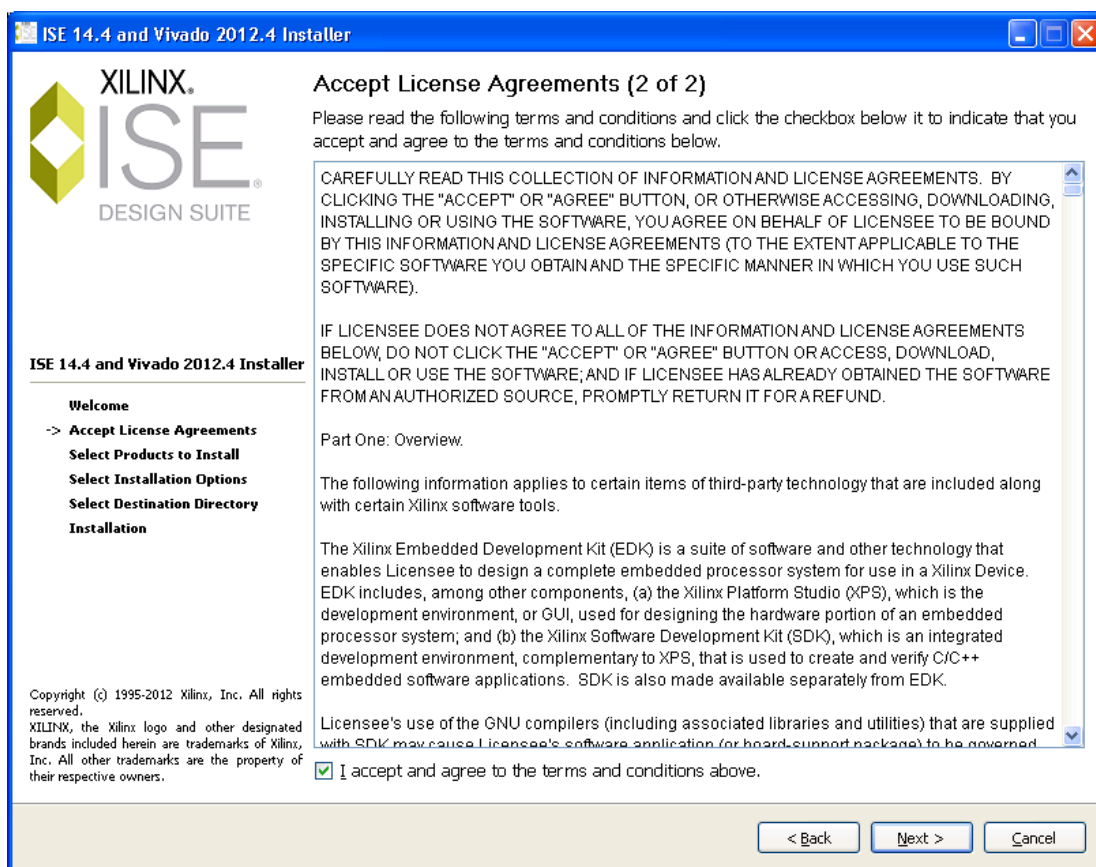
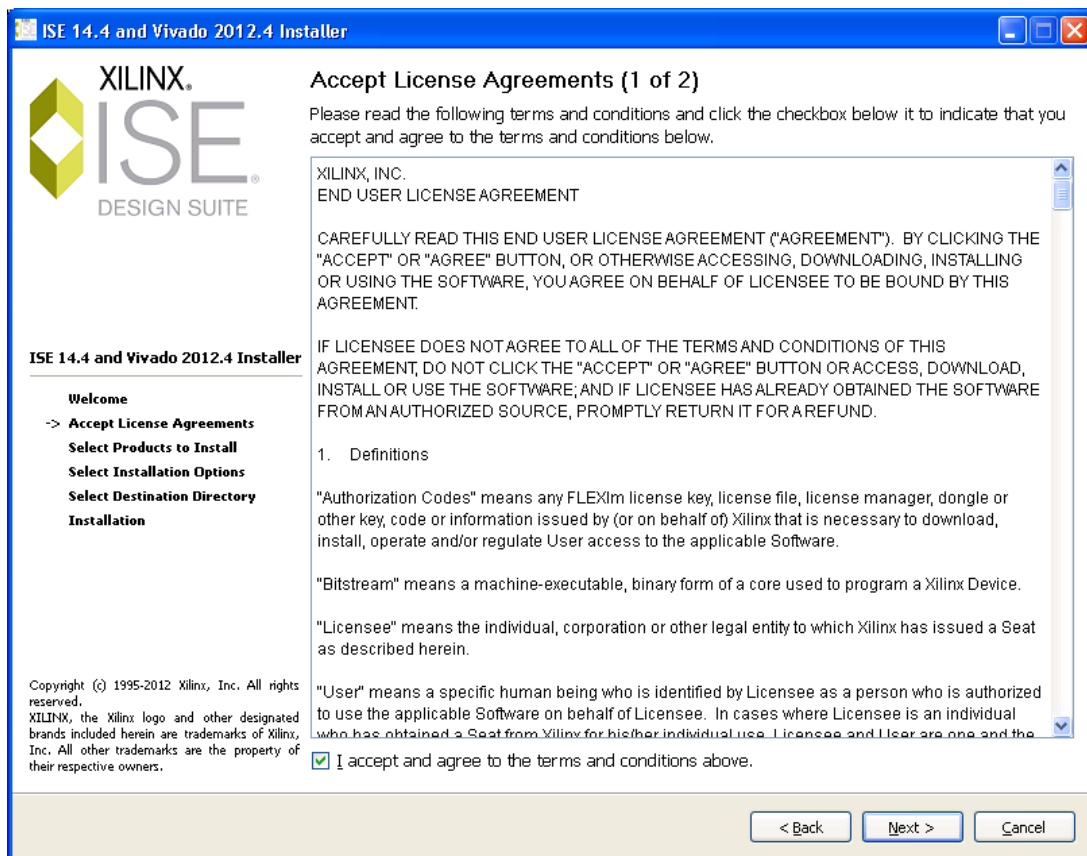
Installation Instructions for Xilinx ISE WebPACK version 14.4

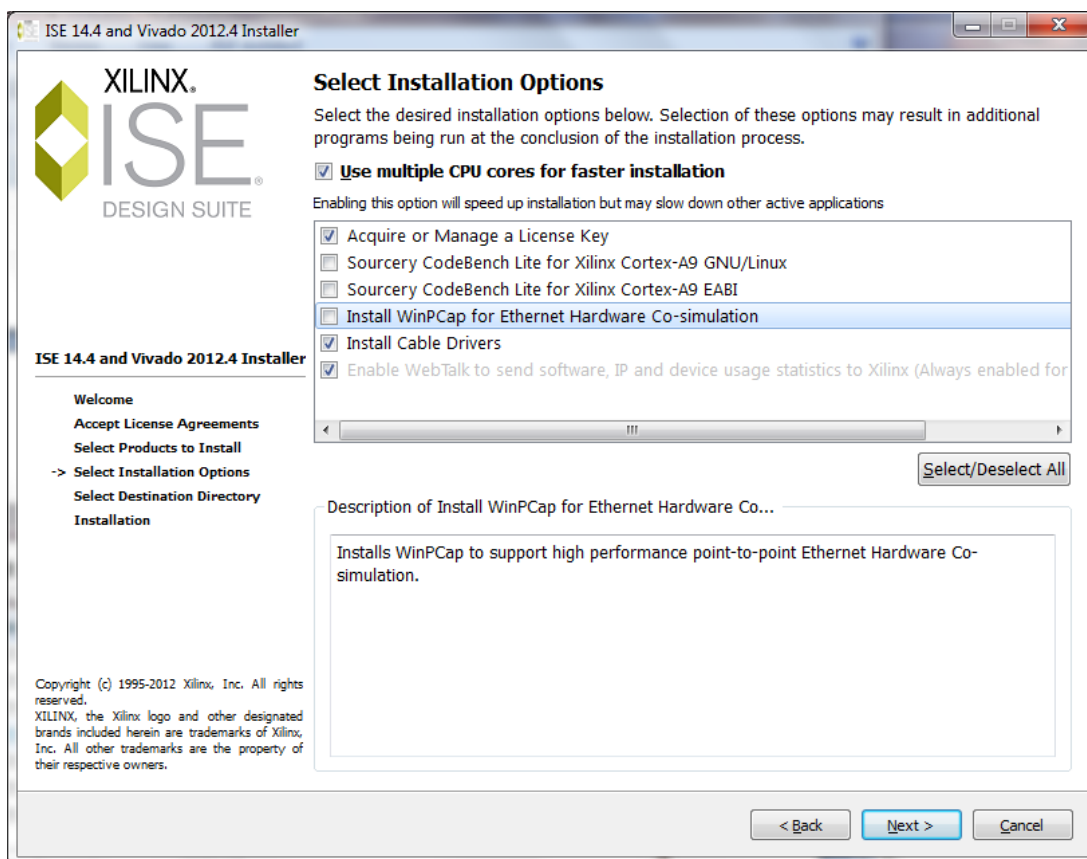
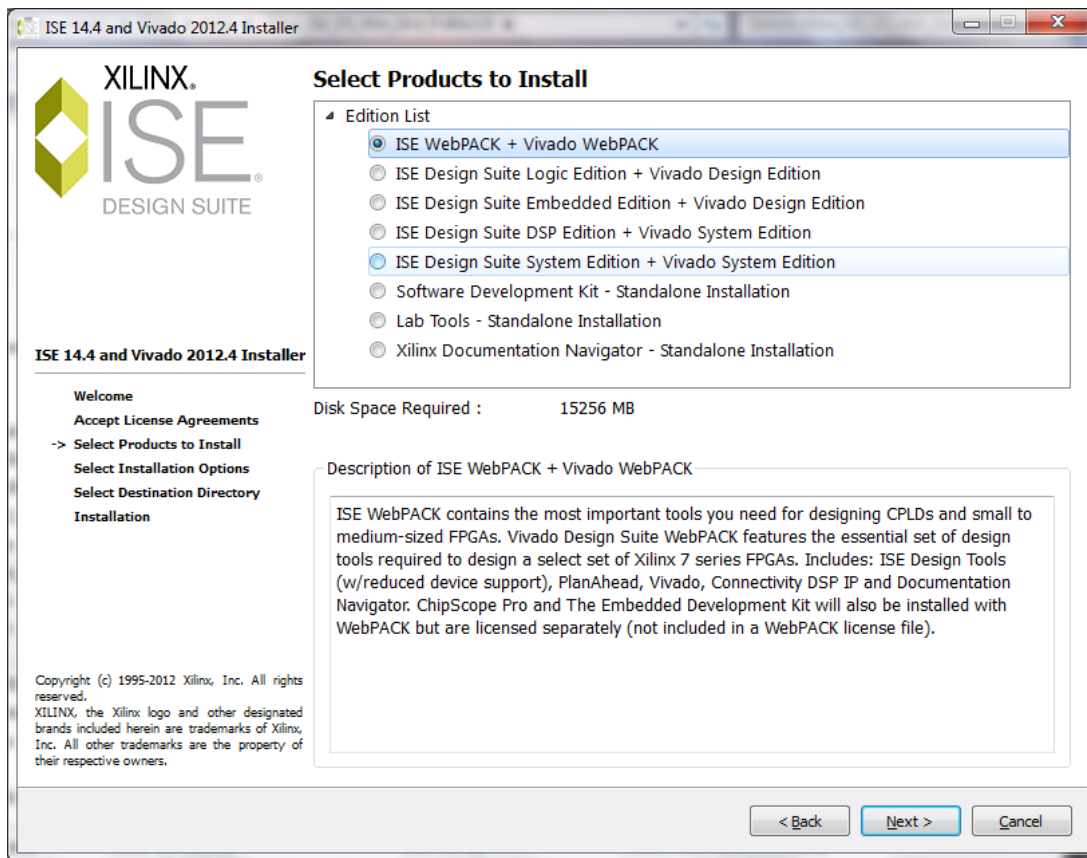
You may download the Xilinx ISE WebPACK from the Xilinx site (over 6 GB; search for “Xilinx ise webpack”) or check out a DVD from the CSEE Department secretary. Version 14.4 (or version 2012.4 – 14.4) is the most current version installed in the ECEN labs in the Austin building. To keep compatibility issues to a minimum, it suggested you run the same version on your laptop that is being used in the lab.

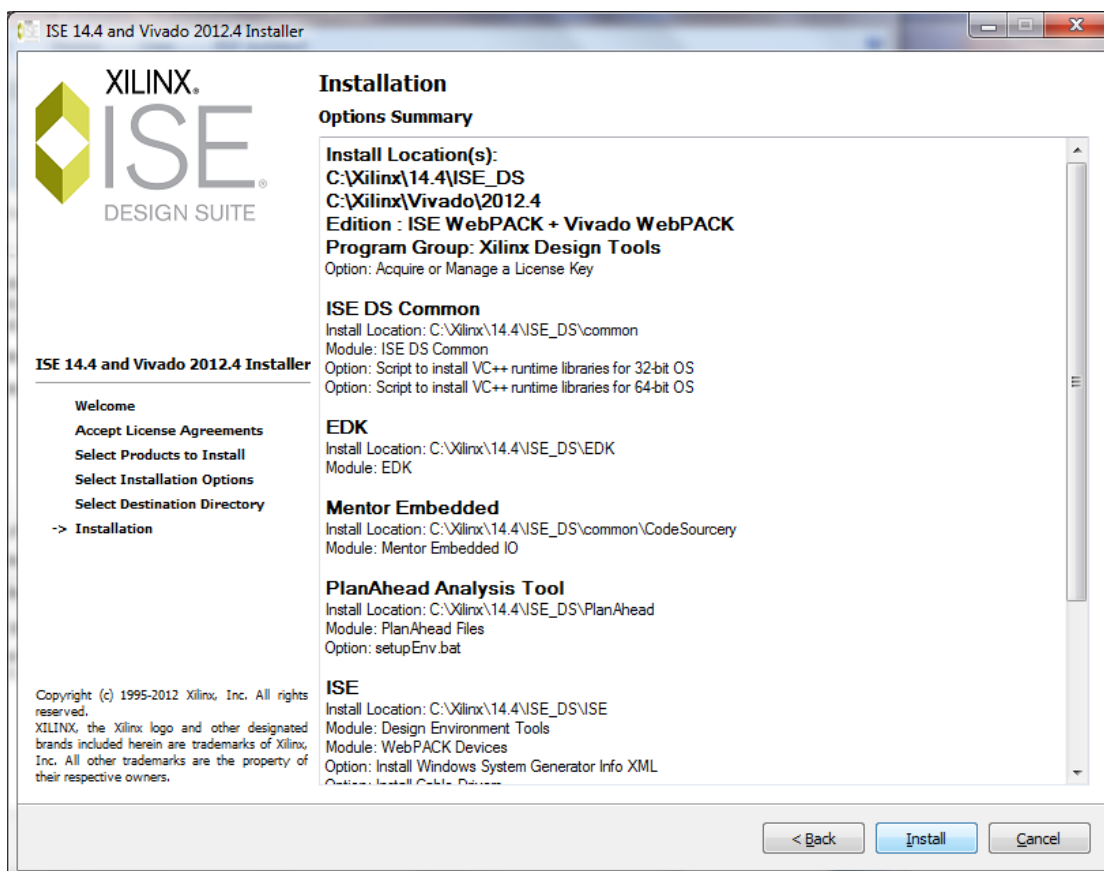
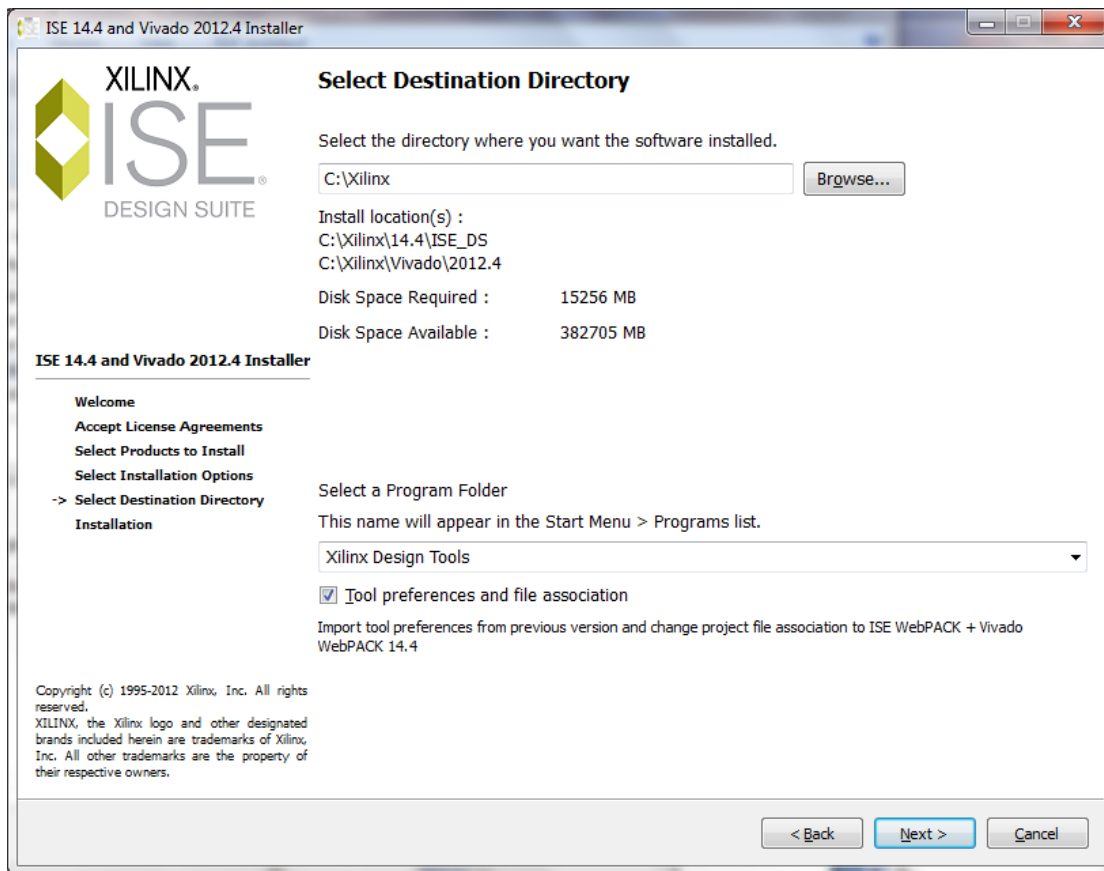
If using the DVD, navigate the directory shown in the next screenshot and execute xsetup.exe. The installation should proceed similarly to the screenshots shown in this document.

You will need to go to the Xilinx “[Licensing Solution Center](#)” web site () to obtain a license to use the free ISE WebPACK software. The install process for the software will take you to the licensing site, if you choose to do this during the install. You will need to access the “Create Account” link (right hand side of the sign-in page) and enter user information. A license will be emailed to you that you will then use to activate the product using the applications license manager. You may, but do not need to enter host ID information to get an ISE WebPACK license.

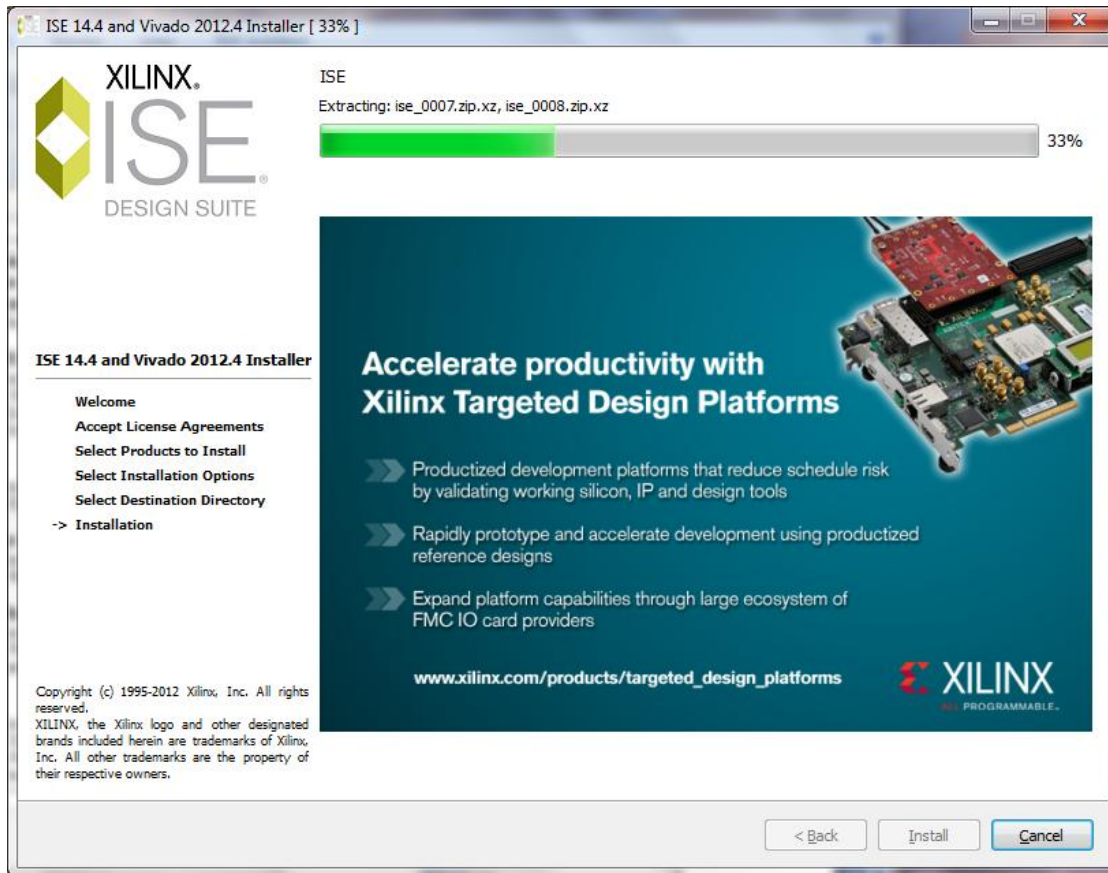




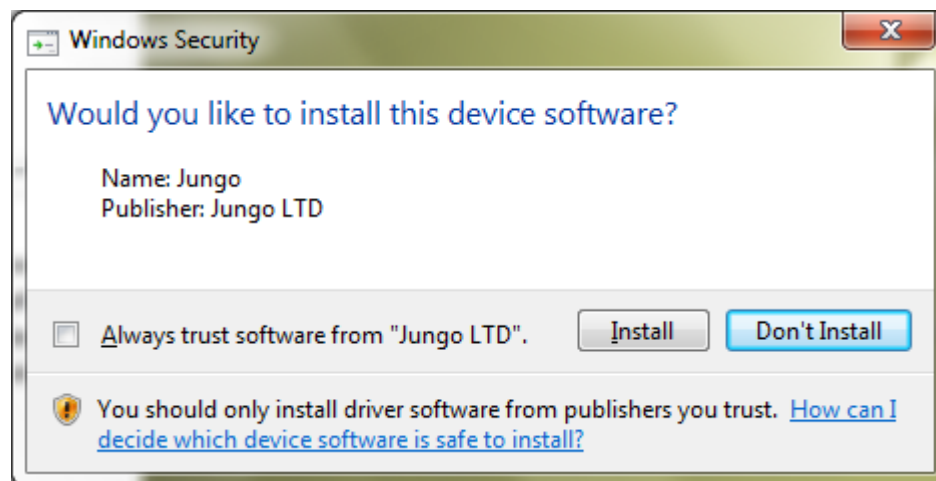


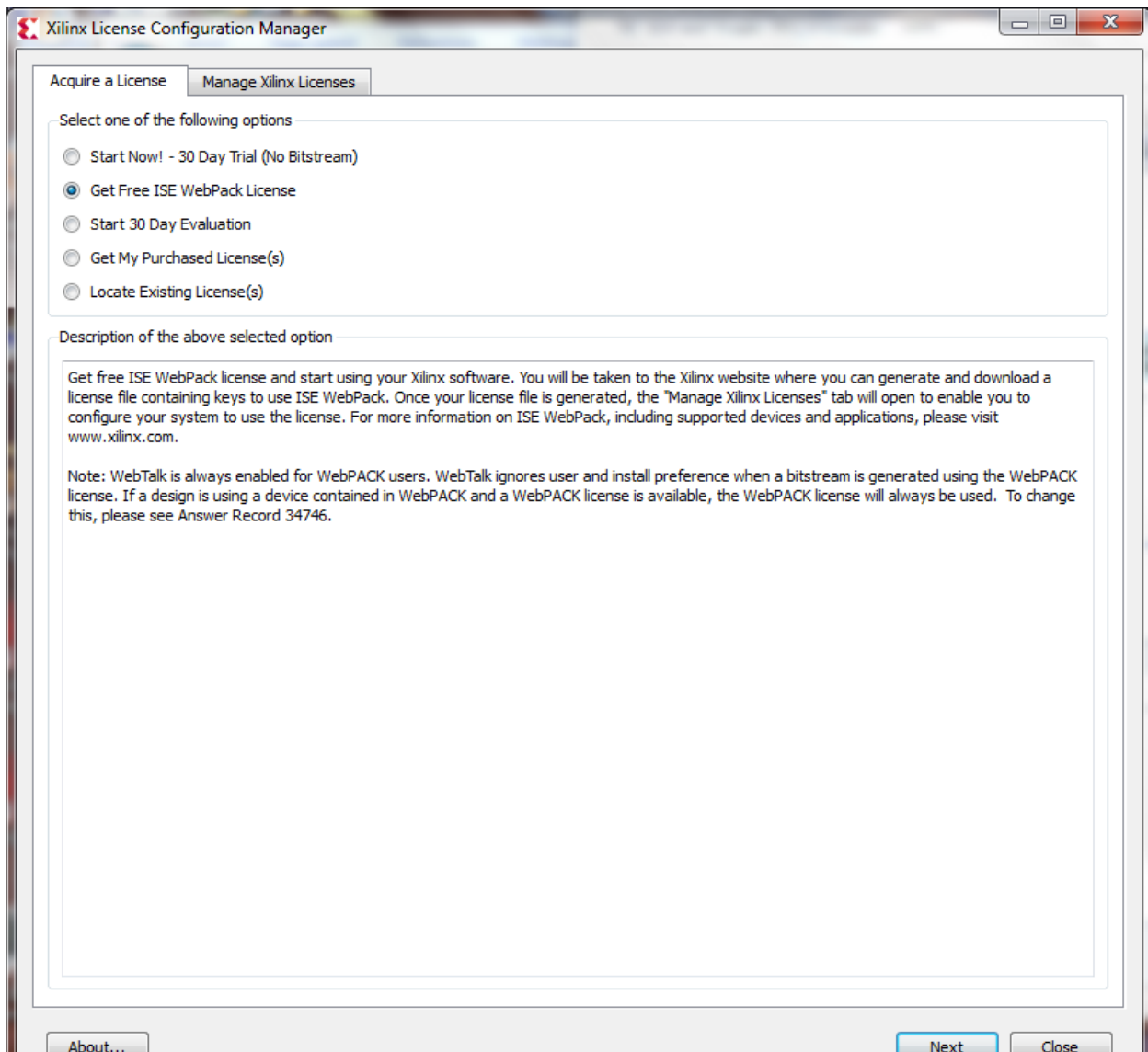


Now you get to wait and wait and wait ...



You may see the following and will need to install this software.





Home : [Support](#) : Licensing Solution Center

Licensing Solution Center

What type of product license help do you need?

[-] Obtain a license for Free or Evaluation product

- **Free or Evaluation Product Licenses** - After completing the installation of ISE Design Suite, the Xilinx License Configuration Manager (XCLM) will start automatically and guide you through the licensing process.

You may also go directly to the [Xilinx Product Licensing Site](#) to obtain licenses for free or evaluation products if you decided to skip this step during product installation.



[+] Obtain a license for Purchased product

[+] Obtain a license for Legacy IP Core Products

[+] Redeem an ISE Design Suite or IP Core product voucher code

[+] Change the license server / host of a product already licensed

Key Documentation

- [Installation and Licensing Guide \(PDF\)](#)
- [Design Tools Documentation](#)

[See All Documentation](#)

Quick Links

-  [Access Product Licensing Site](#)
-  [FAQ for Installation & Licensing](#)
-  [Open a Case With Support](#)
-  [Purchase SW or IP License](#)

Sign in to the Xilinx Licensing Site

User ID

Password

[Forgot your password?](#)

[Sign In](#)

Note: Xilinx employees should Sign In using their Xilinx ID and password.

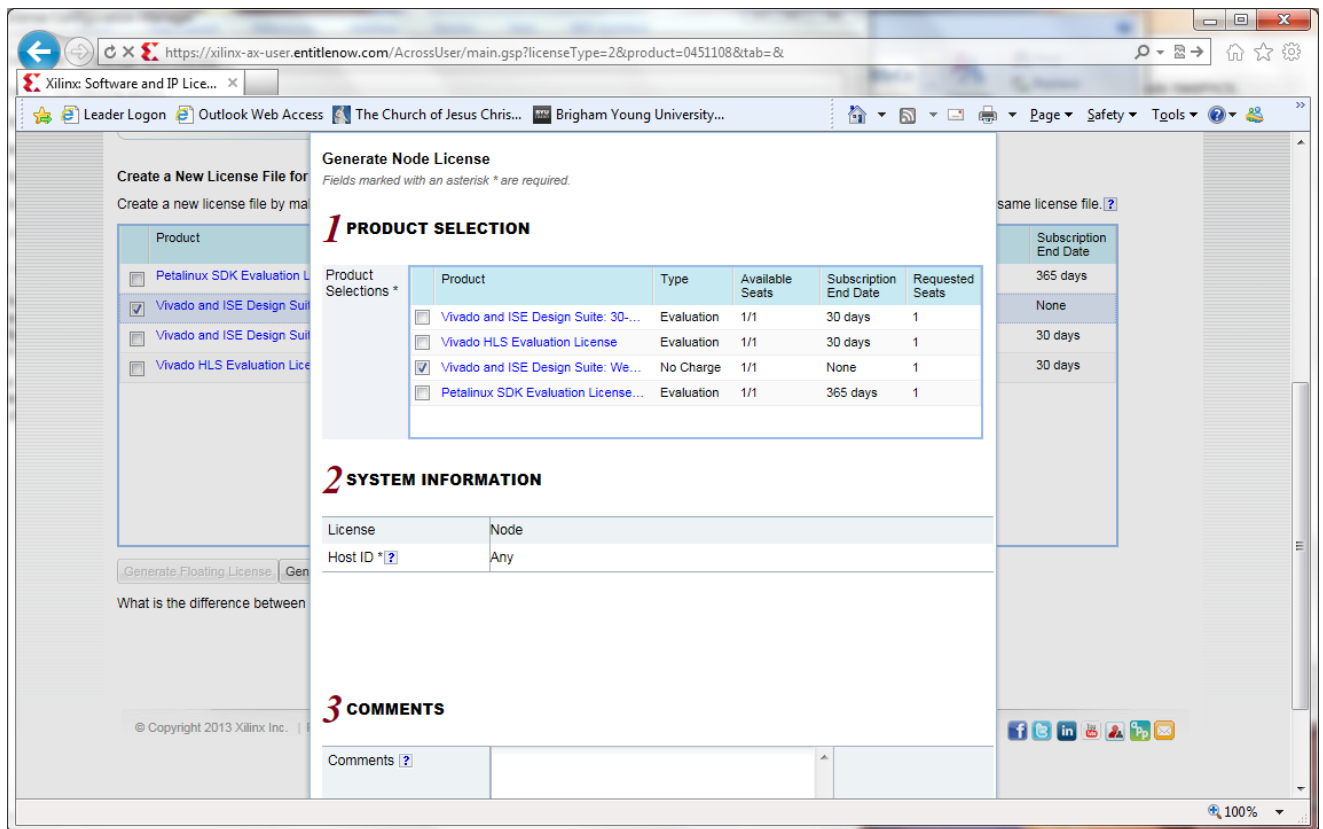
Why register?

Get easy access to all your design needs when you register on Xilinx.com:

- Sign up for product alerts and news
- Join Xilinx support forums
- Download software and tools
- Order products and tools
- Get technical help
- Gain access to special content
- Register for training and events

[Create Account](#)





You may, but don't need to, enter host ID information. Pressing "Next" and then "Next" should get you through the license process. A license will be emailed to you. Follow the directions in the email sent.